

*Committed to serving the men
and women who serve their
communities as Firefighters and
First Responders*



GREAT PLAINS FIRE

...when quality of service counts

2023 Product Catalog

Table of Contents

Apparatus and Service

HME	Page 3
GPF Built Apparatus	Page 4-5
Alexis & Danko	Page 6-7
Pre-Owned apparatus	Page 8
Mobile Service	Page 9

Apparatus Lighting

Whelen & Federal Signal	Page 14-15
-------------------------	------------

Scene lights, Flashlights & Helmet Lights

FRC, Whelen, Akron & ROM	Page 16-17
Nightstick	Page 18-19

Thermal Camera

Argus Thermal Camera	Page 20-21
----------------------	------------

Gas Detector

Detection Tools (Sensit)	Page 22
--------------------------	---------

Vehicle Equipment

Apparatus Accessories	Page 10-11
Ladders, Flares, LZ kit	Page 12-13
Husky Containers & Parts	Page 24-25

Hoses, Nozzles & Fittings

Hoses & Hose Accessories	Page 26-27
Adapters & Fittings	Page 28-29
Nozzles	Page 30-31
Scotty & Foam	Page 23

Pumps

Waterax, CET Pumps	Page 32-36
Waterous, Hale, Foam Pro	
Pyro UHP, K3 Piercing	
Gun, K3 Direct Drive	

Tools

Hand Tools	Page 38-39
------------	------------

Ventilation

Super Vac	Page 40-41
-----------	------------

Salvage Covers & Tarps

Husky	Page 37
-------	---------

Rope Rescue Equipment

RIT	Page 56
-----	---------

PPE & Accessories

Washer & Dryer	Page 44
Extrication Gloves	Page 45-46
Helmet, Gloves & Hoods	Page 47-49
Innotex & Lakeland Gear	Page 50-51
Rocky Boots	Page 52
Black Diamond Boots	Page 53
Lightning X Gear Bags	Page 54-55

Rescue Tools

Genesis	Page 42-43
---------	------------



Great Plains Fire is your dealer for HME fire apparatus for Minnesota, North Dakota and parts of South Dakota.



Contact **Great Plains Fire** for available HME stock units

- Custom & Commercial Pumpers
- Custom & Commercial Tankers
- Wildland & Urban Interface Pumpers



HME will custom build any size and type of truck to fill your departments needs.

Call **Great Plains Fire** today to help you spec your next apparatus



GREAT PLAINS FIRE

...when quality of service counts

CUSTOM BUILT APPARATUS



MN DNR surplus units can be transformed into highly functional apparatus for all fire departments and save you money.

Contact the MN DNR surplus officer and your **Great Plains FIRE** representative today to help you get your next apparatus in your hall.



Management and Sales

Philip Isaacson

Phone: 218.770.8669

E-mail: philisaacson@greatplainsfire.com

Sales NW MN, ND, SD

John Nienaber

Phone: 320.460.0520

E-mail: johnnienaber@greatplainsfire.com

Sales Eastern MN and Metro

Adam Zimmerman

Phone: 507.458.3161

E-mail: adamzimmerman@greatplainsfire.com

Mobile Service

Craig Goodman

Phone: 218.849.2730

E-mail: craiggoodman@greatplainsfire.com



www.GreatPlainsFire.com



GREAT PLAINS FIRE

Will custom build for your department many different configurations of:

- ATV's and slide in units
- Brush trucks and skid units
- Quick Attacks
- Rescues
- Tankers
- Pumper Tankers

Contact us today to help you with your next apparatus.



ALEXIS

Great Plains Fire is your Alexis Fire apparatus dealer for North Dakota, most of Minnesota and parts of Wisconsin.

Contact **Great Plains Fire** for available stock units.

- Ladders & Platforms
- Custom & Commercial Pumpers
- Custom Enclosed Top Mount Pumpers
- Custom & Commercial Tankers
- Custom & Commercial Rescues
- Wildland & Urban Interface Pumpers



Call **Great Plains Fire** about the Alexis Fire Equalizer pumper package. This package comes with 26" deep stainless steel compartments and up to 1200 gallons of water. 1500 GPM pump top or side controls. Plus many more options.





Contact **Great Plains Fire** for:

- Pumper Tankers
- Tankers
- Wildland
- Mini Rescue
- Quick Attacks



Great Plains Fire is your dealer for Pre-Owned apparatus through Fire Truck Resource.

Visit www.greatplainsfire.com or www.firetruckresource.com to view available apparatus.

- Ladders & Platforms
- Custom & Commercial Pumpers
- Custom & Commercial Tankers
- Custom & Commercial Rescues
- Wildland Type Units



Call **Great Plains Fire** to help you find your next Pre-Owned Apparatus



Great Plains Fire is your dealer for Pre-Owned apparatus through Jon's Mid America.

Visit www.greatplainsfire.com or www.jonsmidamerica.com to view available apparatus.

- Ladders & Platforms
- Custom & Commercial Pumpers
- Custom & Commercial Tankers
- Custom & Commercial Rescues
- Wildland Type Units



Pre-owned units, and pricing subject to availability



www.GreatPlainsFire.com



GREAT PLAINS FIRE

...when quality of service counts

Mobile Services:

Apparatus Pump Service

Pump transmission filter removed, cleaned and transmission oil changed (oil included)
Clean relief valve and screen
Inspect and lube all suction valves
Inspect and lube all discharge valves
Inspect, clean, and lube all drain valves
Adjust pump packing
Fill primer oil (oil included)
Cycle primer to check for proper volume
Inspect all suction and discharge valves for proper seal

***oil and labor included in price**

Drain pump to check proper operation of tank to pump valve
Check proper operation of tank refill valve
Check proper operation of pump re-circulation valve
Inspect water and/or foam level gauge and lights
Inspect all panel and warning lights for proper operation
Inspect all chassis and panel gauges
Engage pump and insure proper operation
Insure transfer valve proper operation
Insure discharge and vacuum gauges work properly
Insure relief valve and flush valve work properly
Inspect pump packing after operation

ISO Pump Test

ISO three-stage pump test and capacity test

Written service documentation provided

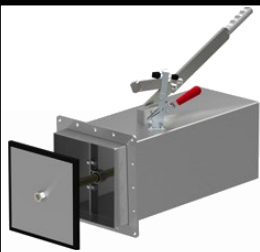
Rescue Tool Service

Change oil on power unit (oil included)
Clean tools
Lube tool pivots
Inspect system for leaks

Inspect hoses for wear
Insure proper working pressure
Written service documentation provided

Other Services Offered:

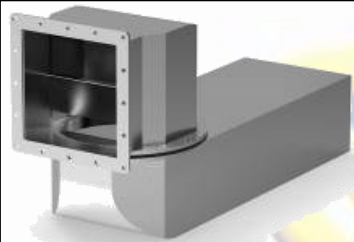
Portable Pump Service & Repair, Quarterly Truck Inspections
Onsite & Offsite pump rebuilds, Onsite Valve Repair, Tank Replacement,
Foam System Repair & Installation, CAFS Installations, Apparatus Refurbishment,
Chassis Replacement, DOT Inspections



Newton 10" Quick Dump

Flip grate dump with manual handle #50

Plunger style dump with manual handle #10

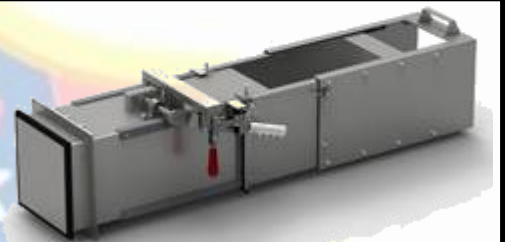


Newton 10" Dump Extension

KD Steel Swivel #6012SW

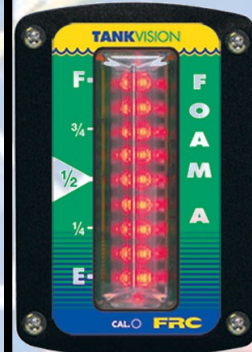
36" telescopic chute for 6012SW

#4036-8x12



FRC Man Saver Bars

Padded bars with length from 16" to 36"



FRC Tank Level Gauges

Tank Vision Water Gauge

#WLA300-A00

Remote Water Gauge

#WLA300-B00

Cab Mini Water Gauge

#WLA205-A00

Tank Vision Foam Gauge

#WLA360-A00

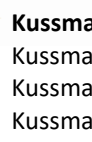
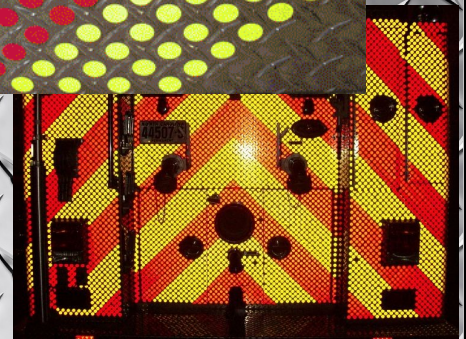
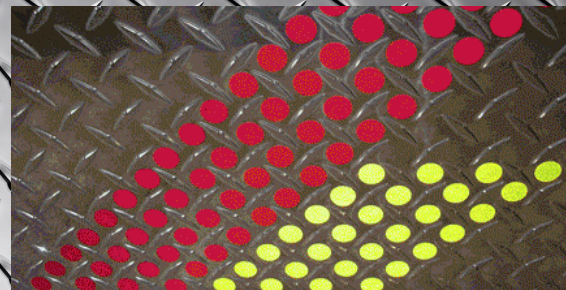


SCENEdots.... A Rear That Wants To Be SEEN

SCENEdot is a patented material that easily creates a reflective area on most any surface of a fire apparatus. There is the original reflective material or the new 3M diamond grade with sealed edges to fill your apparatus needs. Each one comes in a slick sheet format for easier installation. It takes 2 1/2 sheets to cover 1 square foot.

Diamond Grade SCENEdot

Ask **Great Plains Fire** today about installation and pricing for your apparatus.



Kusmaul Products

Kusmaul Pump Plus 1000 Kit

#51-21-1100

Kusmaul Pump Plus 1000 Super Kit

#51-23-1204

Kusmaul Auto Charge 1000 Kit

#51-02-1204

Kusmaul Auto Charge Super Kit

#51-03-1204

Kusmaul Air Eject

#091-28

Kusmaul 120v 20 Amp Plug

#5-20P-H

Kusmaul Cover

#091-3(color)

Kusmaul Super Model

#091-55(color)

Kusmaul Super 20 Auto Eject

#091-55-20-120



www.GreatPlainsFire.com



SCBA Brackets

Assembled Bracket 5.25" diameter **#15251**
 Assembled Bracket 6.1-6.75" diameter **#16751**
 Assembled Bracket 7.25" diameter **#17251**
 One size fits all - with NFPA compliant strap **#14000**



Mounting Plates

4" and 5" Storz **#MF507**
 1.5" male **#MM1501**
 1.5" female **#MF1501**
 2.5" male **#MM2501**
 2.5" female **#MF2501**
 4" male **#MM401**
 4" female **#MF401**
 4.5" male **#MM4501**
 4.5" female **#MF4501**
 5" male **#MM501**
 5" female **#MF501**
 6" male **#MM601**
 6" female **#MF601**



Standard Wheel Chock 8"x8.5"x12" #SWC
 (Orange) HWC
 Vertical Storage Bracket **#VSB**
 Horizontal Storage Bracket **#WSB**



Horizontal Pike Pole Bracket #FBP58Z01C
Vertical Pike Pole Bracket #SMP59Z01C
Pike Pole Ring #PR61Z01C



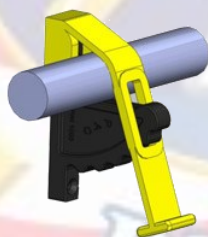
Pinch Point Bar Brackets
#CHR55Z01C



Chrome Horizontal Axe Holder
Blade Bracket #ZAH5101C
Handle Bracket #ZSMA5201C



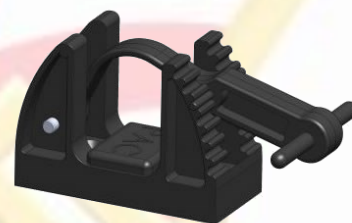
Tired of leaving your tools strewn about, risking safety of passersby and fast degradation of quality? **PAC Tool Mounting Systems** is the answer! **PAC Tool Mounting Systems** have a mount for all your needs from universal to tool specific mounting systems. Visit www.pactoolmounts.com for complete product line



PN 1003HD Tool Lock



PN 1070 Jumbo Lock



PN 1004 Handle Lock

Great for Horizontal Tool Storage



PN 1002HD & PN1002-SHD
 Flex Mount



SOLD IN PAIRS

PN 1001 Hook Locks

Versatile Hanger or Friction Lock



PN 1009 Tool Hanger



K5050L Super
 Adjustamount Kit

Great for Nozzles



Duo Safety 2 Section Ladders

Series 1000-A, 2 3/4" channel rail 750 lb. duty rated, prong feet as standard, rubber safety shoes optional for hard surface use.

10' closed length 7' 2.25" x 18.5" wide x 4.56" thick **#1000-A-10**

12' closed length 8' 2.25" x 18.5" wide x 4.56" thick **#1000-A-12**

14' closed length 9' 2.25" x 18.5" wide x 4.56" thick **#1000-A-14**

16' closed length 9' 11.5" x 18.5" wide x 4.56" thick **#1000-A-16**

Series 900-A, 3 1/4" channel rail 750 lb. duty rated, prong feet as standard, rubber safety shoes optional for hard surface use.

20' closed length 12' 2.75" x 21.75" wide x 5.375" thick **#900-A-20**

24' closed length 14' 2.75" x 21.75" wide x 5.375" thick **#900-A-24**

Series 1200-A, 3 3/4" channel rail 750 lb. duty rated, prong feet as standard, rubber safety shoes optional for hard surface use.

28' closed length 16' 3.25" x 24" wide x 6.5" thick **#1200-A-28**

30' closed length 18' 3.25" x 24" wide x 6.5" thick **#1200-A-30**

35' closed length 20' 3.25" x 24" wide x 6.5" thick **#1200-A-35**

Duo Safety 3 Section Ladders

Series 925-A, 3 1/4" channel rail 750 lb. duty rated, prong feet as standard, rubber safety shoes optional for hard surface use.

22' closed length 10' 8.75" x 24" wide x 7.625" thick **#925-A-22**

26' closed length 11' 8.75" x 24" wide x 7.625" thick **#925-A-26**

Series 1225-A, 3 3/4" channel rail 750 lb. duty rated, prong feet as standard, rubber safety shoes optional for hard surface use.

28' closed length 12' 11" x 24" wide x 9.125" thick **#1225-A-28**

30' closed length 13' 3" x 24" wide x 9.125" thick **#1225-A-30**

35' closed length 15' 3" x 24" wide x 9.125" thick **#1225-A-35**

Series 1525-A with poles, 5" channel rail 750 lb. duty rated, prong feet as standard, rubber safety shoes optional for hard surface use.

40' closed length 16' 10" x 26.5" wide x 9.8" thick **#1525-A-40**



DUO SAFETY LADDER CORPORATION

"Use A Good Ladder Or Stay On The Ground"

Call **Great Plains Fire** if you do not see the Duo Safety ladder you need. Custom sizes available



Duo Safety Roof ladders

Channel rail construction, 750 lb. duty rating

10' **#775-A-10**

12' **#775-A-12**

14' **#775-A-14**

16' **#875-A-16**

18' **#875-A-18**

20' **#875-A-20**

25' **#1275-A-25**



Duo Safety Folding Attic Ladder

300 lb. duty rated

8' **#585-A-8 \$195.00**

9' **#585-A-9 \$219.00**

10' **#585-A-10 \$232.00**

12' **#585-A-12 \$257.00**

14' **#585-A-14 \$270.00**



Duo Safety 2 Section Fiberglass Ladders

4 1/2" channel rails, 750 lb. duty rated, special self extinguishing resin will not support flame, special ultra-violet screen for fade resistance, safety yellow, all fiberglass ladders are non-conductive for 110 volt single phase service with a maximum of 30,000 volts.

All 2 section ladders 23" wide x 7" thick

16' (closed length 10' .5") **#YGE-2-16**

20' (closed length 12' 3.5") **#YGE-2-20**

24' (closed length 14' 3.5") **#YGE-2-24**

28' (closed length 16' 3.5") **#YGE-2-28**

30' (closed length 17' 10.5") **#YGE-2-30**

35' (closed length 20' 3.5") **#YGE-2-35**

Duo Safety 3 Section Fiberglass Ladders

All 3 section ladders 26.5" wide x 9.5" thick

28' (closed length 12' 11.5") **#YGE-3-28**

30' (closed length 13' 3.5") **#YGE-3-30**

35' (closed length 15' 3.5") **#YGE-3-35**



Duo Safety Combination Jack Knife Ladder

Versatile ladder that doubles as an A frame step ladder and a rugged single ladder. Equipped with famous Duo Safety ladder shoes. 750lb duty rated

4'-8' **#35-B-4-8**

6'-12' **#35-B-6-12**

7'-14' **#35-B-7-14**

8'-16' **#35-B-8-16**



Skull Saver Ladder Pads

23"h x 9"w

#SSA100-A23

25"h x 10"w

#SSA100-A25

27"h x 12"w

#SSA100-A27



www.GreatPlainsFire.com

Smart Sequential Road Flares

RDS™ (Rapid Deployment System): Automatically turns on flare when removed from the case

Tilt sensor automatically directs light output to optimize driver awareness

"Pair" mode system allows for single or multiple sets to be synchronized

4 flash patterns to choose from (2 sequential, 1 simultaneous, 1 steady-burn)

Preferred pattern, deployment order, and gravity activation mode settings are saved into memory for next deployment

Automatic synchronization of flares; No programming, no pre-numbering; turn and deploy; That Easy!

Powered by Lithium-ion rechargeable battery (1500 fully depleted charge cycles)

20+ hour runtime (flash pattern dependent)

6 hour recharge time from a completely depleted battery

Charge all flares at once (using dual purpose carrying case)

Kit includes: Carrying/Charging Case, DC 12/24V Vehicle Plug, AC 110/240V Wall Plug, 2 Year Warranty

Generation-2 flare - 22,600 kg (50,000 lbs) of crush strength.

IP66 Water and Dust Proof Rating



Smart Med-Evac Landing Zone Kit

RDS™ (Rapid Deployment System): Automatically turns on flare when removed from the case

Standard Configuration includes 12 High-Power Infrared LEDs, 4 High-Power Visible Green LEDs

Powered by Lithium-Ion Rechargeable Battery

20+ Hour of runtime (continued flash)

6 hour recharge time from a completely dead battery

30,000 lbs (13,600 kg) crush strength (lab tested and certified)

IP67 water and dust rating

Purchase include: Carrying/Charging case, 5 Radio-Connected LZ Flares, 5 Ballasted Range Extender Bases, DC 12/24V Vehicle Plug, 110/240V Wall plug

WHELEN®

ENGINEERING COMPANY INC

Call **Great Plains Fire** today to custom build a lightbar for your department!

Whelen Justice WC



50" all red LED light bar with 8 LED modules - Fully populated to colors of your choosing, -Mounting hardware included
#JY8RRRR

Whelen TAM63



LED 6 head arrow stick with control head
#TAM63

Responder LP Duo Mini Lightbar

6 Duo LEDs - Red, Blue, or Amber



#R1LPM(color)

Justice Mini Lightbar

4 Corner LEDs - Red, Blue, or Amber



#MJY(color)M

Whelen Power Control Center

Switch box with 6
25 AMP switches
#PCC6W



Whelen LED surface lights.
All sizes includes chrome bezel.
Colors: Red, Blue, Amber

60*02F*R

70*02F*R

90**5F*R



Whelen M Series LED surface lights.
All sizes includes chrome bezel.
Colors: Red, Blue, Amber

M4(color)

M6(color)

M7(color)

M9(color)



Whelen Gamma Control

Siren control with 2
light circuit switches
#GAMMA2



Whelen Hands Free Siren Controls



#295SLSA1

Whelen L31 LED Beacon

Colors: Red,
Blue, Amber
#L31H(color)F



Whelen LIN3 LED Surface mount light
with chrome bezel
#RS(color)02CZR



Whelen Composite Speaker
#SA315P



Whelen Universal
Mount

Whelen Roto-Beam Super LED
"Rotating" LED
Beacon
#R416(color)F



Whelen ION V3 Series w/ puddle light option
with chrome bezel
#IONSV3(color)C



Whelen Projector Series
Natural Aluminum Finish
#SA314A



www.whelen.com

www.GreatPlainsFire.com



Federal Signal Allegiant Serial



Low profile, Linear shaped LED light bar. 45" fully populated red/white warning lights. With takedown, alley lights, white flood, amber signal master and interface module.

ALGT45J-F2HMC

Federal Signal Latitude Signal Master



Available in 6 or 8 head models. Solaris LED reflector technology. Includes the economy Signal Master controller. Mounts not included

6 Head **SL6S-A**

8 Head **SL8S-A**

Federal Signal HighLighter LED Plus



Low profile with uniform 360 degree light distribution. Solaris LED reflector technology. 2.7" tall x 15" long permanent mount. Color combinations available.

All red **HL10PC-R**

Federal Signal Q-Siren



Pedestal mount

Q2B-012PSD

Recessed mount

Q2B-012NNSD

Federal Signal Siren Controller



PA 300 compact electronic siren **690000**

Federal Signal FireRay & QuadraFlare



FireRay LED warning lights with a chrome bezel. Colors red, blue or amber.

4x3

FR4-color

6x4

FR6-color

7x3

FR7-color

9x7

FR9-color



QuadraFlare LED warning lights with a chrome bezel. Colors red, blue or amber.

4x3

QL43-color

6x4

QL64-color

7x3

QL73-color

9x7

QL97-color

Call **Great Plains Fire** for more Federal Signal products. We can get you what you need.

Federal Signal Siren Speakers



DynaMax/ES100C with bracket **ES100C**



BP Series with stainless "F" grille **BP200-EF**

Federal Signal MicroPulse Ultra 3



MPS31U-color

Federal Signal Pro LED Beacon



300TMP-color



XSTREAM single head light blue/red/white cigarette plug. **XSM1C-BRW-US**

WHELEN®

ENGINEERING COMPANY INC



WHELEN Pioneer & Pioneer Plus Series Spotlights, Floodlights, and combination Spot/Flood
Injection molded polycarbonate optics lenses are hard-coated to minimize environmental damage
Die-cast and aluminum powder coated
Color temperatures reach 6,000° Kelvin, simulating bright midday light
5 year warranty
Pioneer floodlight single lamp 3,700 lumen output, dual 7,400 lumen output
Pioneer Plus floodlight single lamp 8,100 lumen output, dual 16,000
Available in brown mount, recess mount, universal mount, and pole mount
Spot/ Flood combination lights available also

Please contact **Great Plains Fire** for configuration pricing



Pioneer Nano™

Available in 3 or 6 diode models
8° spotlight pattern comes standard
Includes additional 40° x 20° flood lens
Optic lens changes easily via four screws in picture frame fixture
Powder coated stainless steel bail

Nano 3 diode #NP3BW
Nano 6 diode #NP6BW



Pioneer Micro™

8° spotlight pattern comes standard
Includes three additional lenses for light patterns of flood, wide flood, horizontal flood.
Optic lens changes easily via four screws in picture frame fixture
Built-in nylon screw grommets eliminate galvanic corrosion
Pricing based off of universal mount, other mounts available
#MPBW

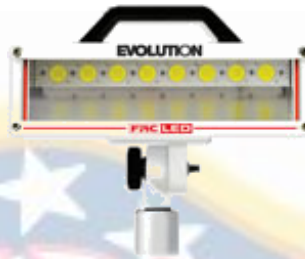




SOBRITE
7000 Lumen LED light
Compact design
12 Volt 5 amps
CD Base Mounting
#SRA110-07A

FRC Evolution II
12V LED Scene Light

Push Up
#FCA530-V11
#FCA530-V20
Pull Up
#FCA542-V11
#FCA542-V20
Top Mount
#FCA570-V11
#FCA570-V20



FRC Spectra 900
LED scene lights
12 volt 4,600 lumens
#SPA902-Q65

Chrome bezel and surface mount



FRC Firefly
surface mount LED
compartment light.
LED110-Q01

FRC Spectra

120V AC, 20K Lumen Lamp Head,
SPA100-K20
12V DC, 20K Lumen Lamp Head,
SPA100-Q20
120V AC, 20K Lumen, Push Up
SPA530-K20
12V DC, 20K Lumen, Push Up,
SPA530-Q20
120V AC, 20K Lumen, Pull Up
SPA510E-K20
12V DC, 20K Lumen, Pull Up
SPA510E-Q20
120V AC, 20K Lumen, 3" Sq. Top Mount
SPA510-K20
12V DC, 20K Lumen, 3" Sq. Top Mount
SPA510-Q20
120V AC, 20K Lumen, Tri-Pod
SPA600-K20



FRC
FIRE RESEARCH CORP.



FRC Spectra LED Portable Light
120v AC, 20,000 lumens.

SPAKR700-K20-ON



ROM Stand alone light strips

Mounting Options

- 3M dual sided tape
- Pre-Punched Slots
- Adjustable Mounting Brackets

#R03000-(size)

6"	42"	72"
12"	48"	78"
18"	54"	84"
24"	60"	90"
30"	66"	96"
36"		

R.O.M.
CORPORATION

Excellence made to order.



Akron 12V LED Extenda-Lite® Scene Lights

19,000 Lumens
#ELSS-XLDC Lamp Head

#ELSS-XLDC-PS-SM2 Push Up

#ELSS-XLDC-PU-SM2 Pull Up

#ELSS-XLDC-PU-TM Top Mount



Rechargeable LED Area Light Kit

- 1,000 lumens on high brightness mode, 500 on low
- Includes 6' tripod, AC / DC power supplies and carrying case
- Rechargeable Li-ion battery
- Multi-angle tilt and swivel design with magnetic base
- Constructed from lightweight 6061-T6 aluminum

NSR-1514C

INTRANT™ Intrinsically Safe Dual-Light™ Angle Light



- CREE LED technology – 50,000+ hours LED life
- 8 User-selectable brightness settings for the Flashlight and Floodlight including a 20 Lumen Survival Mode
- Dual-light (both the flashlight & floodlight on at the same time) provides for maximum lighting versatility and user safety
- 3 AA batteries (included)
- Upgradeable to rechargeable by adding Lithium-ion Battery Pack, Charger and AC and/or DC Power Supply
- Limited Lifetime Warranty

XPP-5566RX



Tactical Fire Light w/ Mult-Angle Helmet Mount

- 180 Lumens
- 3 Hours run-time
- Momentary or constant-on
- Can be mounted to virtually all Fire Helmets and Hard Hats
- 140 Degrees of adjustability
- Meets the requirements of NFPA-1971-8.6 (2013)

FDL-300R-K01



Intrinsically Safe Dual Light Lantern-Rechargeable

- 210 Lumen flashlight for 12 hours
- Flashlight/Floodlight/Dual-Light™
- User-selectable brightness settings on Flashlight & Floodlight with 30 Lumen Survival mode
- cULus, ATEX, and IECEx certified Intrinsically Safe
- Meets the requirements for NFPA-1971-8.6 (2013)
- Charger meets requirements of NFPA-1901 (2009)

XPR-5580R



Helmet-mounted Multi-Function Dual Light Flashlight

- Flashlight / Floodlight / Dual-Light™
- User-selectable brightness on Flashlight & Floodlight including 15 Lumen Survival mode on Floodlight
- Works with virtually all fire helmets and hard hats
- Meets the requirements for NFPA-1971-8.6 (2013)

NSP-4650B



Safety Light/ Flashlight Combo Kit

- Has both a tight-beam long-throw flashlight and a wide-angle two colored flashing safety light array
- Lighting modes: momentary and constant-on flashlight, full-power constant-on white floodlight, flashing amber safety light & dual-light (both the flashlight & floodlight or flashing safety light array at the same time)
- Two button design top: flashlight, bottom: floodlight/safety light Powered by 4 AA batteries (included)
- Kit includes one heavy weighted magnetic base and one red safety cone

NSP-1170-K01



Fortem Helmet Mount Light

XPP-5466R

- Intrinsically safe helmet mount dual light
- Flash light flood light dual light
- 250 lumens
- 45 degree angle flood light
- Rear facing green safety LED light
- Works with virtually all helmets
- Meets requirement of NFPA 1971-8.6 2013



Forge Helmet Mounted Light

- Two models to choose from with the same features
- Single push button on used easily with gloved hand
- 360 lumens on high mode
- Rear facing green light

Intrinsically safe model **XPP-5465R**

Standard model **NSP-4640B**



Integritas intrinsically safe rechargeable lantern

XPR-5582RX

- LED technology with a multi position tilting head
- 1750 lumens with 5 hour run time and low beam capable
- Rear facing green safety lights
- Low battery indicator and shoulder strap
- Locking snap charger
- Integrated lithium-ion rechargeable battery
- Light meets NFPA-1971-8.6 2013
- Charger meets NFPA-1901-14.1 10.2 2016



Intrinsically safe flash light with multi angle mount

XPP-5418RX-K01



Aluminum mini tac flash light

- 100 lumens
- Two AAA batteries

MT-100BL

MT-100R



DUAL SWITCH DESIGN

FLOODLIGHT
HIGH MEDIUM SURVIVAL STROBE

SPOTLIGHT
LOW MEDIUM HIGH



RECHARGEABLE

MULTI-POSITION TILT-HEAD DESIGN

XPR-5586GX

- 10 run time on either flood or flash light mode
- 900 lumen dual light mode
- Intrinsically safe
- Dual red LED tail lights for safety
- cULus certified
- IP- 67 dustproof/ Waterproof
- Meets NFPA-1971-8.6 2013
- Charger meets NFPA-1901-14.1.10.2



Intrinsically Safe Dual Light Lantern-Rechargeable

- 1100 Lumen flashlight
- Flashlight/Floodlight/Dual-Light™
- cULus, ATEX, and IECEx certified Intrinsically Safe
- Meets the requirements for NFPA-1971-8.6 (2013)
- Charger meets requirements of NFPA-1901 (2009)

XPR-5581RX

argus®

thermal imaging from Avon Protection



MI-TIC-E-1

INTRODUCTION

The Mi-TIC E is the world's smallest high resolution thermal imager for fire fighting applications. The camera provides a crystal clear image with dynamic range up to 760°C (1400°F) and at the same time see very low temperature objects, which is ideal for casualty searches. Every Mi-TIC E is supplied with a unique dual use desk-top/in-truck charger station which securely retains and charges both the thermal imager and a spare battery. The charger stations can be daisy-chained together, up to a maximum of 6 units.

PERSONAL

Weighing approximately 750g (26oz) the Mi-TIC E is a small format thermal imager that can be easily and comfortably held in the palm of your hand. Unlike many thermal imagers, the Mi-TIC E design allows it to be worn in multiple ways – in the hand, inside a pocket, clipped outside a pocket, clipped to a lanyard or hung around the neck

MI-TIC-E-1



MI-TIC-320-3

The Mi-TIC 320 is part of the argus range of thermal imaging cameras and is the world's smallest NFPA 1801 certified high resolution thermal imager for fire fighting applications. The camera provides a crystal clear image with a superb dynamic range: you can clearly view extremely high temperatures without whiteout, and at the same time still see very low temperature objects, which is ideal for casualty searches. Every Mi-TIC 320 is supplied with a unique dual use desk-top/in-truck charger station which securely retains and charges both the thermal imager and a spare battery. The charger stations can be daisy-chained together, up to a maximum of 6 units.

PERSONAL

Weighing approximately 750g (26oz) the Mi-TIC 320 is a small format thermal imager that can be easily and comfortably held in the palm of your hand. Unlike many thermal imagers, the Mi-TIC 320 design allows it to be worn in multiple ways – in the hand, inside a pocket, clipped outside a pocket, clipped to a lanyard or hung around the neck.

MI-TIC-320-3



argus[®]

thermal imaging from Avon Protection

Mi-TIC^S



The lightest and most affordable NFPA 1801 certified thermal imager.
With a 3.5" display at only 1.8 lbs
Temperature range of -40°F to 2000°F
5 second start-up time

Standard configuration includes
2x zoom with 3 button control
Hot and cold spot tracker
Laser pointer
Video recording
Lanyard, charger, spare battery

Standard battery 1100 MAh, 6.6 V standard capacity battery with 2 hour battery life.
Less than 2 hour charge time
Includes lanyard, truck charger, spare battery



MI-TIC-S-3



Sensit P100 Personal Gas Meter - One button operation. 2 year life before service needed. Limited 2 year warranty
 Carbon Monoxide **#912-00000-03**
 Hydrogen Sulfide **#912-00000-05**
 Oxygen **#912-00000-13**
 Hydrogen Cyanide **#912-00000-07**



Sensit P400 is a multi gas personal monitor designed to warn the user of hazardous gases in their working environment. The P400 can be configured with 1 to 5 sensors also with or without pump

Four Gas without pump **#923-FC000-40**
 Four Gas with pump **#925-FC000-40**

To add fifth sensor choose from the following choices:
 C12, NO2, HCN, PH3, SO2, ETO Add to above cost **(-5X)**

Four gas calibration kit with case **#881-00084**



Sensit HCN CO The new Sensit HCN CO with its rugged construction and powerful rotary pump, hot air probe and bright LCD display makes it perfect for testing ambient air and hot gas samples. Infrared communication allows printing of test results to a compact printer (accessory) or PC. Simple and convenient
#913-FC000-12
 Calibration Kit **881-00058**



Sensit Gold Series - Leak detection and gas monitoring combined in a single package. These instruments can be custom configured to meet your needs when detecting combustible gases in the LEL range, locating combustible gas leaks in the PPM range, measuring CO and/or H2S. All instruments are equipped with an internal pump for constant sampling. Audible and visual alarms warn the operator of hazardous conditions.

Sensit Gold Four Gas **#909-FC000-H**
 Sensit Gold Four Gas and Cal Kit **#909-FC000-H-Cal**
 Calibration Kit Only **#881-00030**



Sensit TKX

The TKX is a state-of-the-art multi gas detector used to rapidly locate combustible gas leaks. High sensitivity allows rapid leak detection and tick rate control to pinpoint leaks. Low initial cost and low maintenance make the SENSIT® TKX the perfect choice.

High sensitivity allows immediate leak detection

Audio and visual leak indicator

Adjustable tick rate to pinpoint leaks fast

Solid state sensor

#902-FC00-02



Ansul Class A
Foam 55 Gal Drum
#433443

Ansul Class A Foam
#433442



Silvex Class A Foam
#434467

In-line Foam Eductor

1.5" inlet x 1.5" outlet
¼, ½, 1, 3, 6% rates @ 125gpm



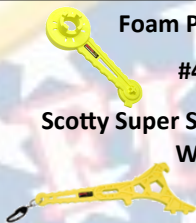
#203-125

Foam Pail Wrench

#4578-YF

Scotty Super Spanner/Foam Pail Wrench

#4579-YF



Waterous Fire Troll

In line foam eductor. Great for brush trucks or skid units!



#83437

Scotty Portable Foam Units

1.3 gallon jug 3, 8, 15, 30, 50, 70, or 95gpm., 3/4" GHT and 1.5" NH swivel inlet.

#4075-(gpm)A

3 gpm #4075-3

8 gpm #4075-8

Variable eductor unit .5%-3%

#4075-(gpm)AV



Scotty Forestry Back Pack

5 Gallon Back Pack #4000bp

5 Gallon Pack w/foam #4000f-bp



Scotty "Through The Pump" Foam eductor kit

#4072-kit



Scotty Portable Foam Sticks



15, 30, 50 gpm 1.5" inlet
#4010-50A

(3) 12" foam cartridges
#4010CART12



3 gpm, 3/4" GHT
#4010-3

(3) 6" foam cartridges
#4010CART6

Visit www.scottyfire.com for videos!

Apparatus Foam Injection Systems

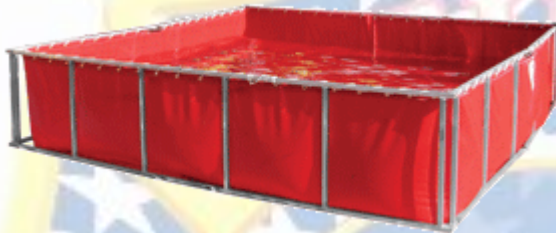
Great Plains Fire can convert your current apparatus to have foam system capabilities with models from the top name manufacturers. Please contact **Great Plains Fire** for an estimate to convert your apparatus to a Hale, Waterous, or Foam Pro System. Call for pricing and installation.





HUSKY

Portable Containment



Standard Folding Tanks

500-5000 Gallons
All frame tanks are 29" tall
Includes "Easy Lift" handles
22oz vinyl wall with 28oz vinyl base.

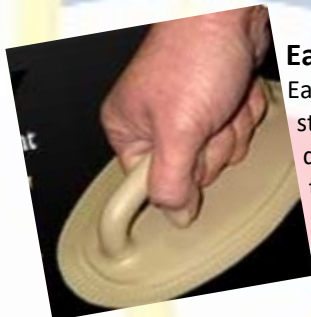


Skinny™ Tank

Folding frame tank with narrow design.
It gives you more options for where you can set up your drop tank.

Replacement Liners & Frames

Contact **Great Plains Fire** for pricing



Easy Lift Handles

Easy lift handles come standard on all Husky drop tanks, making tear-down quick and easy!

Quick Dump Option

Drain your tank in seconds for quick tear-down!



Portable Drop Tank Racks built to any size drop tank. Includes front and rear wind dam, lever lock hold downs, heavy duty hinges, and aluminum/stainless steel construction.



Pro500 Tank Liner The Ultimate Replacement liner for your existing folding Frame Tank

- Fits in your standard tank rack and any standard frame including our Skinny Tank, which works great on one-lane backroads!
- No need to remove frame uprights with Pro500 liner
- Minimal setup— Unfold, unhook, & Go
- Bladders can be deployed and folded by just one person
- On a Slope? No Problem! Bladders will not cause Pro500 to roll over!
- Need more gallons? Deploy as many bladders as needed or use as a regular tank
- The Pro500 bladders can be custom sized. Bladders can be added and made of different sizes.

Lightweight Flexible Hard Suction Hose



2.5" NST x 10'
4" NST x 10'
4.5" NST x 10'
5" NST x 10'
6" NST x 10'
4" Storz x 10'
5" Storz x 10'

(Cam-lock style also available. Call **Great Plains Fire** for pricing)
Lengths from 5'-25' available with all couplers or combinations. Call **Great Plains Fire** for your suction needs!

ST2 Lubricant



Dry lubricant for hose ends and fittings. Work for both storz and threaded ends. Contains no grease, applies wet and maintains lubricity when dry. Does not collect dirt or debris.
#ST2-12oz



Hose Washer
Up to 3" **#39700**
Up to 5" **#39800**



Flamefighter Hose Tester
Capable of up to 1800' per test. Comes with built in hose washer wand. 2.5" connections with reducers for 1.5"

#HT10025

Call
Great Plains Fire
for more hose,
hydrant,
apparatus testing,
and cleaning
supplies!

Low Level Strainer

Sizes 2½"-6" available
All aluminum construction
1½" Jet siphon on all sizes 4" and up

LL25	2.5"
LL40	4.0"
LL45	4.5"
LL50	5.0"
LL60	6.0"

Storz Fittings

LL407	4.0"
LL507	5.0"



Husky Supply Line Holders

Single **#SLB-25**

Double **#SLBD-25**



Power Jet Siphon

All aluminum construction
Storz and camlock fittings available
#JS(size)

4"
4.5"
5"
6"



Self Leveling Floating Strainer

All aluminum construction
Sizes 2½"-6" available

FBS25	2.5"
FBS40	4.0"
FBS45	4.5"
FBS50	5.0"
FBS60	6.0"

Storz Fittings

FBS407	4.0"
FBS507	5.0"



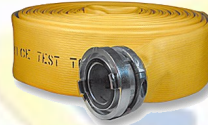
Call **Great Plains Fire** if
you do not see the
water supply products
you need.

We will find it for you!



ARMTEX HD Attack Hose-10 year Warranty

Double Jacket Rubber Lined
Immune to mildew and rot
1200 psi burst pressure, 400 psi service pressure
Colors: white, red, blue, orange, green, tan, yellow
25' 50' & 100' lengths available
10 year Warranty



Jafrib LDH-10 Year Warranty

Synthetic, single jacket with nitrile/PVC rubber
Lining and cover, made in a single extrusion
eliminating risks of separation or blistering.
4" 700psi burst, 200psi service pressure
5" 600psi burst, 200psi service pressure
Colors: Red or Yellow

Soft Suction-10 Year Warranty

Pricing is 5" Jafrib with 4.5" female long handle
with either 4.5", 5", or 6" female long
handle.



Forestry Hose-10 Year Warranty

Circular woven single jacket with polyurethane
liner. Immune to mildew and rot. 900psi burst,
300 psi service pressure
Color: White Lengths 25' 50' & 100'



Light Weight 1" Booster Hose

Polyester woven jacket w/heavy duty
polyurethane liner 1500psi burst, 300psi service
pressure NST expansion coupling standard
Color: red only lengths 25' 50' 100' & 150'



FRC JACK STRAP

Hose handling system.
Made From 2" Webbing.
Adjustable from Supply
Line to Hand Line.
Shoulder Loop for Pulling
and Support.
#JSA100
Accessory Pouch
#JSAoption-P

GROVES TILTING HOSE ROLLER

27" Diameter Table
Heavy Steel Construction
Powder Coated Red Finish
Sturdy Casters for Easy Movement
#TT-27



Call **Great Plains Fire** for more hose, hydrant, apparatus testing, and supplies!



ARMTEX HP Hose

Resists burn-through for a full minute
 Oversized inner jacket for increased water flow
 Outstanding kink resistance
 1.75" x 50' colors florescent yellow, army green, red, blue
 2.5" x 50' colors blue and florescent yellow
10 year Warranty



JAFLINE HD Hose

Made in the USA
 Immune to mildew and rot
 All weather performance: retains pliability to -40F
 Double jacket construction polyester and EPDM rubber ozone lining
 Coated for better durability
 High burst rating: 1200 psi up to 3" diameter
 Colors: yellow, red, orange, blue, tan, green and white
10 year Warranty



JAFX4 Hose

Revolutionary co-extrusion technology creates a "Four layer hose in one operation" without the use of adhesives forming a homogeneous hose which cannot delaminate.
 Resists burn through.
 Super resistant to abrasion.
 Low friction loss and high kinking resistance.
 UL19 certified.
 Color yellow.
10 year Warranty

Mobile Hose Dryer

- Made in the USA
- Built to dry hose, immersion suits, wet or dry dive gear and/or de-contaminated hazmat suits
- Stores and dries up to 1200' of 1 1/2" - 1 3/4" or up to 800' of 2 1/2" - 3" hose
- Complete with 4 heavy-duty 5" casters
- Made of heavy-duty steel with red power coated finish
- Optional hangers hold turnouts, rope, webbing, slings and salvage covers

MHD-80





Double Swivel Female Rocker Lug
Long Handle available for 2.5" and larger
#35R(size x size)

Size	1"	1.5"	2"	2.5"	3"	4"	4.5"	5"	6"
1"	X	X							
1.5"		X		X					
2"									
2.5"				X	X	X	X	X	X
3"									
4"						X	X	X	X
4.5"							X	X	X
5"								X	X
6"									X



Double Male Rocker Lug
#36R(size x size)

Size	1"	1.5"	2"	2.5"	3"	4"	4.5"	5"	6"
.75"	X	X		X					
1"	X	X		X					
1.5"		X		X					
2"									
2.5"				X		X	X	X	X
3"									
4"						X	X	X	X
4.5"							X	X	X
5"								X	X
6"									X



Rigid Female Rocker Lug to Male
Long handle available on 4" and larger
#37R(female x male)

Size	Male									
	.75"	1"	1.5"	2"	2.5"	3"	4"	4.5"	5"	6"
.75"										
1"	X									
1.5"	X	X			X					
2"										
2.5"	X	X	X				X	X	X	X
3"										
4"					X			X	X	X
4.5"					X		X		X	X
5"					X		X	X		X
6"					X		X	X	X	



Hazmat Adapters
1.5" x (2) male garden hose thread
#40H15FGG
2.5" x (2) male garden hose thread
#40H25FGG

KOCHER CO. INC.
Harrington, Inc.
LDH System Specialists

NH or NST - National Hose Thread also known as National Standard Thread
NPT - National Pipe Tapered
NPSH - National Pipe Straight Hose
GHT - Garden Hose Thread

Combination of threads available on all fittings.

rotek
Firefighting Equipment



Rocker Lug Caps & Plugs Chrome Finish and Long Handles Available. Call for Pricing.

#Cap(size)
#Plug(size)

Size	1"	1.5"	2"	2.5"	3"	4"	4.5"	5"	6"	4" Strz	5" Strz
Cap	X	X		X	X	X	X	X	X	X	X
Plug	X	X		X	X						

Call **Great Plains Fire** for chrome finish pricing, and special thread requirements.

Great Plains Fire can get most all types of thread patterns.

Cam Lock style adapters also available.



Storz to Female Adapters



	2.5"	4"	4.5"	5"	6"
4" storz x rigid female #S37S-(size)	X	X	X	X	X
4" storz x swivel female #S54R-(size)	X	X	X	X	X
4" storz x long handle female swivel #S54L-(size)	X	X	X	X	X
5" storz x rigid female #S37S-(size)	X	X	X	X	X
5" storz x swivel female #S54R-(size)	X	X	X	X	X
5" storz x long handle female swivel #S54L-(size)	X	X	X	X	X

30 Degree Storz x Female Adapter



	2.5"	4"	4.5"	5"	6"
4" Storz x Rocker lug female #SKE(size)R	X	X	X	X	X
4" Storz x Long handle female #SKE(size)L	X	X	X	X	X
5" Storz x Rocker lug female #SKE(size)R	X	X	X	X	X
5" Storz x Long handle female #SKE(size)L	X	X	X	X	X



Akron Revolution intake valve with 30 degree swivel elbow. Compact design to take up less pump panel space. Available in 4"-6" thread sizes and 4"-5" storz.
#7982 10 year warranty

Akron Revolution intake valve with straight connection. Compact design to take up less pump panel space. Available in 4"-6" thread sizes and 4"-5" storz.
#7983 10 year warranty



4" x 5" Storz to Storz Adapter

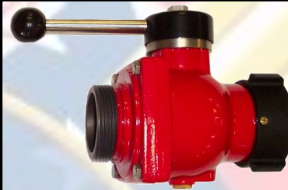
#S60S54



Kochek Hydrant Adaptor

4" #SZMC4045-3

5" #SZMC5045-3



2.5" Hydrant Gate Valve

#595



2.5" Hydrant Valve

#596



2.5" x (2) 1.5" Gated Wye

#520



Forestry Wye

1" inlet x (2) 1" outlet

#505

Call **Great Plains Fire** if you do not see the fittings or adapters to fit your needs.
We will find it for you!

Gear Actuated Intake Valve



4" #BV78H-40AH

4.5" #BV78H-45AH

5" #BV78H-50AH

6" #BV78H-66AH



Akron Turbo Jet Adjustable GPM Nozzle

1" #1702
1 1/2" #1720
2 1/2" #1733



Akron Ultra Jet Nozzle

The UltraJet nozzle is all-in-one, combining both smooth bore and fog patterns.
1.5" or 2.5" #1820



Akron Assault Fixed GPM Nozzles

1" #4802
1 1/2" #4824
2 1/2" #4826



Akron ProVenger Nozzle

Selectable Gallonage
1" w/o pistol grip #1602
1 1/2" w/ pistol grip #1616
Fixed Gallonage
1 1/2" w/pistol grip #4116



Akron One Piece Stream Shaper

1 1/2" #3485
2 1/2" #3485



Akron Aluminum 1" Forestry Nozzle #1030



Akron Mercury Monitor

It shall have a 2 1/2" inlet with a full time swivel and a 2 1/2" outlet. The monitor should weigh no more than 14 lbs less the nozzle, and have dimensional layout of 9"H x 14.5"L x 23.5W (deployed). The legs shall fold away to reduce the width down to 7.75".

#3444



Protek Selectable Gallonage Nozzles

1" 5-10-24-40 gpm @100psi #360
1" 13-25-40-60 gpm @100psi #361
1.5" 30-60-90-125 gpm @100psi #366
1.5" 95-125-150-200 gpm @100psi #367
1.5" 30-60-95-125-150-200 gpm @100psi #369
2.5" 95-125-150-200-250 gpm @100psi #368



Protek Playpipe with Tip

2.5" selectable gallonage
95,125,150,200,250 gpm
@100 psi #368-TP



Protek Dual 2.5" Line Ground Monitor

Dual clappered inlet, 32lbs, Compact folding base
Complete Kit– monitor, base, 845 nozzle, 119 stream shaper, 120 quad stacked tip, Direct mount flange w/3" NPT thread
#622-kit



Protek 2.5" Single Line Ground Monitor

Small light weight (14lbs.), Folding legs w/ carbide spikes, Flows up to 500 gpm.
Complete Kit– monitor, 822 nozzle, 119 stream shaper, 117 deluge tip
#600-kit



Protek Smooth Bore Tips

1.5" triple stacked tips 1", 1 1/8", 1 1/4"
#115

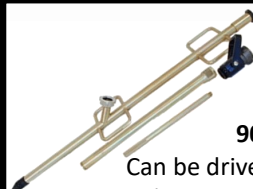


2.5" quad stacked tips 1", 1 1/8", 1 1/4", 1 1/2"
#118
2.5" quad stacked tips 1 3/8", 1 1/2", 1 3/4", 2"
#120



Protek Ball Shut Off

1" inlet x 1" outlet 3/4" waterway #100
1.5" inlet x 1.5" outlet 1" waterway #101
1.5" or 2.5" inlet x 1.5" outlet 1 3/8" waterway
#102-(inlet)
2.5" inlet x 1.5" outlet 1.5" waterway #103
2.5" play pipe shut off 1.5" outlet 1 3/8" waterway
#130



900 Series Piercing Nozzle

Can be driven with a mallet, cover up to 25' in all directions, All come with shut off and mounting hardware.
90° Nozzle #906K
Battering ram w/2' Extension #910K



Blue Devil Rylstatic



- Better FOG effect
- Ease of Maintenance
- Less friction loss through the nozzle
- No spinning teeth
- Reach increased in straight stream position
- Smaller water droplets

95-200 gpm 2.5" #I218201

30-150 gpm 1.5" #I218884

5-50 gpm 1" #I217637



K3 FIRE

COMPACT UHP SOLUTIONS

TURBOPIERCE



Quickly pierce vehicles, concrete block walls, steel, or any known construction material and get UHP water into hard to reach fires without adding oxygen. The gun is complete and ready to operate with no additional components. Simply connect directly to an existing UHP skid. The compact tool easily fits in any truck cabinet and includes a durable custom case. Gun magazine holds the abrasive and is easily refillable in the field.

- An abrasive waterjet piercing gun for ultra-high-pressure (UHP) firefighting
- Consists of a handheld gun, refillable abrasive magazine and custom case
- No electronics or wireless devices
- Button for instant on/off abrasive
- Mixing takes place at the end of the gun barrel and does not require abrasive to be “pushed”, as a highspeed wear element, through any hose or extremity
- Abrasive material is housed in a quick-change magazine. The magazine is integral to the gun shoulder-stock
- Covered by a free five year warranty

Dimensions 45.5 x 11 x 2.6 inches

Weight 15 lbs (with loaded abrasive magazine)

Requirements 10 - 20 GPM Water Input 1200 - 2000 PSI Water Input

Contact **Great Plains Fire** to schedule a demonstration.



www.GreatPlainsFire.com

K3 FIRE

COMPACT UHP SOLUTIONS



Due to its advanced drive-train, **DIRECTDrive** is hundreds of pounds lighter, much smaller and more efficient than other systems in its class. That means a bigger variety of vehicle options and plenty of power.

Stainless steel pump house and panel - nothing to rust

Solid state, water resistant electronics - no mechanical relays to fail or corrode

Advanced helical gearbox for a quieter run and more efficient transfer of power

Compressed air blowout & antifreeze winterization / storage ports

Designed with maintenance in mind - all filters are easy to see and reach

22 HP engine with electric start Manual and Auto throttle selection system

Electric rewind reel with 3/4" UHP hose and quick connect couplers

Foam Proportioning system (0.5, 1.5, 2, 3, 6% selections)

Electronic water and foam level gauges, low water and foam flashing indicators with low water audible alarm

Auto water & auto foam tank fill systems

Full LED pump panel light bar, VMUX electronics, resettable circuit breakers and all connectors are IP 67 rated for water resistance

Gives you 16 times the water surface area for quicker fire knock down.

Droplets are lighter and have longer hang-time. More heat is effectively absorbed per gallon of water used- truck water will last 6 times longer.

Droplets are just light enough to follow the fire flow path & get drawn right into the flames. No need to get as close to the actual fire.

90-95% of the water is used in the fire, meaning less water damage and carcinogen laden water run-off.

Great way to get out ahead of the green technology movement.

A 3/4" UHP line is far more maneuverable for car fires or weaving through brush and trees on wildland scenes. Easy to get in & around room and content fires.

Lighter line & lower flow rate lend themselves better to limited staffing & quick attack.



20gpm skids for Wildland, Fast Attack or First Response Vehicles

MORE EFFECTIVE. Ultra High Pressure (UHP) breaks down a standard water pressure droplet to 64 micro droplets using a pressure of up to 1400psi. This creates 12 times the surface area to capture more heat energy. Resulting in 90% of the water used efficiently to put out the fire. Conventional droplets are too large to be effective, only the very outside layer is effective, up to 85- 90% of the water goes right through the fire and ends up as runoff. Take out far more fire with far less water!

SAFER. Smaller, lighter droplets have better 'hang-time'. Droplets will suspend longer in the upper thermal layers, reducing heat in the most dangerous part of the fire. These droplets are light enough to be drawn into the flowpath of the fire sending suppression to where it is needed most. These micro droplets will get into every nook and cranny of a vehicle or house helping to extinguish fires that aren't immediately visible.

FASTER. More efficient use of the water allows a fire department to be effective with far less water enabling them to reduce the size of the vehicle needed. A smaller vehicle is far more mobile and can get to the fire much quicker. These vehicles can also get closer to the fire itself. The PyroBlitz system has 200' of charged line, further reducing the deployment time needed at the fire scene. With fires burning 8 times faster these days it is even more critical to get on the scene and flowing water faster.

Call For Custom Quote



www.GreatPlainsFire.com



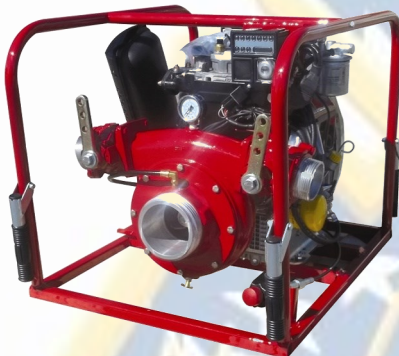
**CET 60 CFM
CAFS Optimum
Gas Powered**

Diesel Powered



**CET 35 CFM
CAFS Optimum
Gas Powered**

Diesel Powered



**CET 30hp Kohler
High Volume Pump
700gpm**

*Great for tanker or
dry hydrant
applications*

**CET 18hp Vangard
300 gpm**

Most Popular Pump

**CET 20hp Honda
300 gpm**



**CET 11hp Honda Pump
265 gpm**

Great for Skid Units

**CET 9hp Honda Pump
200 gpm**



**CET 13hp Floating Pump
400 gpm**

*The most GPM you will
find*



**Waterous PB18-3030-C
Standard 3" NPT fittings
400 gpm (wrap around frame
available)**



ACCEPT ONLY THE BEST

**CET 11hp Honda
High Pressure Pump**

**CET 20hp Honda
High Pressure pump**





Hale HPX200-B23

Vanguard 23hp
225 gpm
175 Max PSI

Hale HPX 75-B18

Vanguard Briggs 18hp
135 gpm
350 Max PSI



Don't see the pump to fit your needs?
call:
Great Plains Fire
We will find it for you

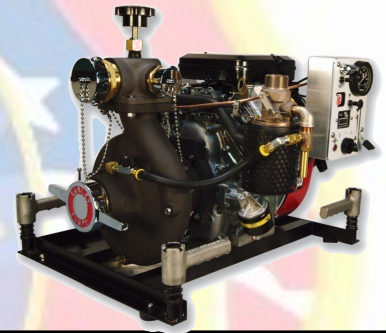


Darley 2BE13V

Vanguard 13hp
300 gpm

Darley 2BE18V

Vanguard 18hp
375 gpm



Darley Davey 9hp

Honda 9hp
120 gpm

Darley Davey 10hp

Yanmar 10hp Diesel
120 gpm



Foam Pro TurboStream

13hp, 8gpm, 1400 psi, high
pressure pump
w/foam capabilities

Great for Wildland



Salvage Tarps, Hall Runners, & Debris Carriers—18oz vinyl

Hall Runner

3'x18' #HR3x18

Salvage Tarp

9'x12' #HTV-9x12

12'x14' #HTV-12x14

12'x18' #HTV-12x18

14'x18' #HTV-14x18

20'x20' #HTV-20x20

2 Man Debris Carrier 10oz Canvas w/handles

6' x6' #DC-OD-6x6



RIT Staging Mat

10' x 10' 18oz PVC Mat

Each Corner is Marked RIT

#RIT-1010



Full/Empty Staging Tarp

6' x 10' 18oz Vinyl Mat

Excellent on Scene Visual of SCBA Cylinders

Ribbed Mat for Anti Bottle Rolling Available
Ribbed Width 9"

6'x10' #F/E-T6x10

6' x 10' Ribbed #F/E-T6x10R



Emergency Equipment Staging Mat

Full Scene Staging Consists of RIT Section, Rescue/Tool
Section, and SCBA/Bottle Section (Ribbed)

Can be Used as One Complete Tarp or Individually

18oz Vinyl

Small Scene 6' x 10' #EESM-SS

Large Scene 10' x 12' #EESM-LS



Triage Tarps

Four Tarps (Red, Yellow, Green, Black) 10oz Vinyl
10' x 12' With Bag

#TT-1012



Universal Spanner Wrench
#USW7501A



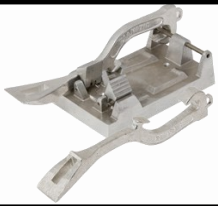
Folding Spanner Wrench

#PSW74Z01Z



Kochek Hydrant Hammer

#K03-H



Double Spanner Wrench Bracket w/Wrenches
#WH76201A
Double Bracket Only
#W7601-2



Adjustable Hydrant Wrench
#AHW7001X

4 Storz Spanner w/ Bracket
#KS34
Double End Wrench Only
#KS3



Triple Bracket w/ 2 Spanner Wrenches & 1 Hydrant Wrench
#WH76301A
Triple Bracket Only
#WH7601A
Replacement Clip
#WH76-1



Rubber Mallet

32 oz. Hickory Handle #RMH

32 oz. Fiberglass Handle #RMFG



Zak Tool Hydrant Wrench
Ratcheting Hydrant Wrench

#ZT79



Sledge Hammer Fiberglass Handles

8# SH08

10# SH10

12# SH12

16# SH16

20# SH20



Bolt Cutter

14" BC14

18" BC18

24" BC24

36" BC36

42" BC42

48" BC48



Kochek #39 Skipper Spanner Wrench

#BOST2



Kochek Double Head Spanner Hydrant wrench

#K05



Kochek Storz Hydrant wrench

#K08



Drywall Hook

Fiberglass Handle Pike Poles by FlameFighter

Choose from drywall style, regular (closet) hook, or trash hook

Oversized D-Handle for ease of use with gloves

D-Handle lined up with pike head 90 degrees offset available

1.25" OD w/.91 ID makes these one of the sturdiest in the industry. 35% thicker

Pike Poles over 10' will be 2 piece for shipping



Trash Hook

	3'	4'	6'	8'	10'	12'	14'
Pike Pole #PP(length)	X	X	X	X	X	X	X
Pike Pole w/D-Handle #PP(length)D	X	X	X	X	X	X	X
Drywall Hook w/D-Handle #DWH(length)D	X	X	X	X	X	X	
Trash Hook w/D-Handle #TH(length)D	X	X	X	X	X	X	



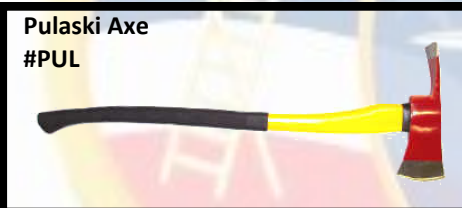
Fire Rake
#FR



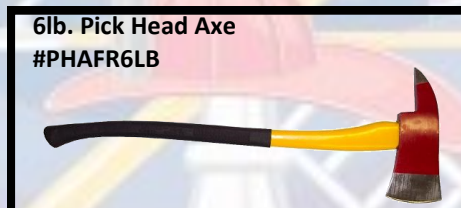
McLeod Tool
#MT



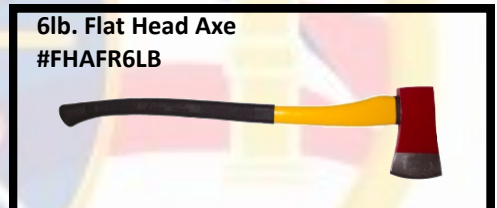
Fire Flapper
#FF



Pulaski Axe
#PUL



6lb. Pick Head Axe
#PHA6LB



6lb. Flat Head Axe
#FHA6LB



Round Point Shovel

27" D Handle
#RPS-27D

48" Handle
#RPS-48



Square Point Shovel

27" D Handle
#SQP-27D

48" Handle
#BQP-48



44" Fiberglass Handle

#LSS-44

27" Handle
#LSS-27D



Fire Broom

#FB



Build-A-Pole

Salvage kit includes: dry-wall hook, Squeegee, Square nose shovel, Push broom, (2) 4" Extension handles with grips, (1) 4" Extension

#BPSALVAGEKIT

Roof kit includes: 3' pike head, 3' Rubbish hook, 3' D-Handle, 4' Extension

#BPROOFKIT

Carry Bag (-Bag)

Pinch Point Bars

24" #PB24

36" #PB36

51" #PB51

60" #PB60



Zak Tool Halligan Bar Knurled Handle
Heat treated 41-40 alloy end welded to make it virtually one piece 36" long.

#ZT302-36



Lifetime Warranty

SuperVac Direct Drive Valor Fans



18" : the most popular size PPV – perfect combination of size and power

20" : capable of handling larger jobs – great for departments with larger residential structures

Valor Series: The latest frame from Super Vac featuring a patent pending aluminum frame design that is simple and intuitive. Features a true full roll cage, 15% lighter than previous designs, 5 position tilt via a quick step pad, ability to easily attach duct makes the Valor one of the most versatile fans on the market – available in 18" & 20" – Stream Shaper Guard comes Standard

18" 160 cc #V18 GB

20" 160 cc #V20 GB

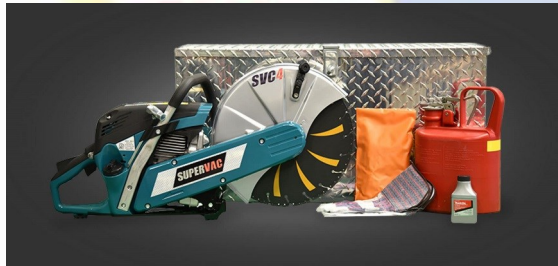
18" Electric #V18 EV

20" Electric #V20 EV



ALL FAN PRICES INCLUDE FREIGHT

Please call **Great Plains Fire** if you do not see the SuperVac fan for your department needs.



SVC4 Cut Off Saw Kit

Includes:

- (1) Saw with Tiger Tooth Blade
- (1) Spare Tiger Tooth Blade
- (1) Pair Safety Glasses
- (1) Pair of Ear Plugs
- (1) Pair of Gloves
- (1) Bottle of 2 Cycle Oil
- (1) One Gallon Gas Can
- (1) Treadplate Storage Box
- (1) Drive Belt
- (1) Fuel Cap
- (1) Starter Cord
- (1) Air Filter
- (1) Spark Plug

SVC4-14-Kit-AL



1-Carbide-Tipped Chain:

Converts select battery-powered chain saws into a light-duty firefighting saw capable of cutting through asphalt shingles, hurricane glass, roofing materials and more; easily sharpens with diamond equipment

2-Modified Bar:

Allows the wider chain gauge to operate with added room, putting less strain on the saw for repeat use; the bar is slotted to work with Super Vac's Quick Silver depth gauge

3-Quick Silver Depth Gauge:

Prevents the blade from cutting too deep during roof ventilation

SV789-16



www.GreatPlainsFire.com



Milwaukee

Super Vac 18" Variable Speed Battery Fan



DEWALT
FLEXVOLT

1. Compact, Roll-Cage Frame: Features a tough yet lightweight aluminum frame to protect key components while providing a compact, lightweight design.
2. 180-Degree Tilt: Provides the largest tilt range among battery fans, allowing airflow to be directed virtually anywhere.
3. DeWalt FLEXVOLT or the Milwaukee Lithium Ion Batteries: Provide up to 45 minutes of max airflow, depending on battery selection. Also, the shore power option allows you to run off of 120v AC for unlimited use.
4. Polymer Blade: Minimizes weight; Super Vac's single-piece cast aluminum blade is available by request.
5. Precision-Spun Steel Shroud with StreamShaper Guard: Shroud provides durability with max airflow, while the StreamShaper guard allows for flexible setback; Air Cone Guard available by request.

DeWalt models

V18-BD-09-AC-SP

Milwaukee models

V18-BL-08-AC-SP

GENESIS

RESCUE SYSTEMS

E FORCE

Genesis E Force tools use common Milwaukee lithium ion batteries

Our Most Popular



E Force C236 Cutter
7.9" Blade Opening
236,000lbs Max Cutting Force



E Force 21/36 Ram
35.8" Opened Length
24,953lbs Max Spreading Force



E Force S 45 Spreader
24.6" Spreading Distance
29,674lbs Max Spreading Force

Call *Great Plains Fire* today to schedule your demo and experience the performance of the Genesis Rescue tools. All Genesis tools are third party tested and NFPA compliant.

Ask for the performance cut sheets!

Genesis has a wide variety of tools to fit your departments needs. Visit their website to see all they have to offer

www.genesisrescue.com



Genesis "BRUTE" 17c Combi Tool

Are you looking for a rapid deployment tool for vehicle extrication and RIT. The "BRUTE" 17c is simply the best for this application. Weighing in at only 47.4 lbs. and having a spreading distance of 16" and a max spreading force of 160,055 lbs. makes it best in class. Not to mention the "BRUTE" has a max cutting force of 115,965 lbs. This NFPA compliant tool will give you many uses. Call *Great Plains Fire* today to set up a demonstration.



Genesis Motor Vehicle Crash Kit

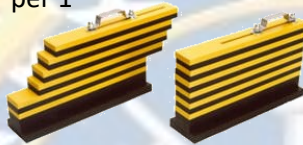
Includes: HRS Hood Tool, 911 Battery Cable Cutter, Pro Hack Saw & Blades, Spring Window Punch, V-Knife Belt/Wire Cutter, ART Glass Removal Tool, ProShield Rescue Blanket, 6 Piece Hand Tool Set.

#ART97000

Deluxe Spring Punch #ART.345.100.1



Quick-Crib Slide Chock #ART.317.015.2 per 1



Quik-Kut Glass Tool #ART50012 Replacement Blade #ART50015



Genesis Quik-Kut Air Hammer Kit #ART89501 Genesis Quik-Kut Air Hammer & Impact Kit #ART89502

Genesis Kodiak Stabilization Strut Kit



Strut Kit

Includes:
2-Kodiak struts
2-15" extensions
2-30" extensions
2-Ratchets w/J-Hook
2-Crosshead end fittings
1-Carry Case
#ART.500.100.1

Deluxe Strut Kit

Includes:
2-Kodiak Struts
2-15" extensions
2-30" extensions
4-Ratchets w/J-Hook
2-Crosshead end fittings
1-Carry Case
#ART.500.102.2

Tri-Strut Kit

Includes:
3-Kodiak Struts
3-15" extensions
3-30" extensions
4-Ratchets w/J-Hook
3-Crosshead end fittings
1-Carry Case
#ART.500.103.3

Genesis Kodiak Kit Lifting Device



THE KODIAK LIFTING DEVICES ARE DESIGNED TO EASILY ATTACH TO YOUR EXISTING KODIAK STRUTS WITHIN SECONDS TO GIVE RESCUE PERSONNEL LIFTING CAPACITY

ART.500.600.KLD



E Series Washer Extractor

Designed to drive down water, electrical and gas costs while improving productivity, E-Series High-Performance Washer-Extractors deliver high-speed extract, an easy-to-install freestanding design, unmatched durability and the ultimate in programmability! E-Series commercial washers deliver more performance using less labor, natural resources and chemicals. The E-Series front-load washer is available in 20- to 255-pound capacity models.

Call for Pricing



Groves EX22 Washer Extractor



- Front load design
- Commercial quality construction
- 22 lbs. capacity
- Automatic soap dispenser compatible
- Utilizes standard plumbing hook ups
- Requires only 120v ac
- Easy to use, preprogrammed wash cycles

#EW-22

Optional auto soap dispenser #ADS-SEK0-1 PUMP



Groves FH2G PPE Dryer



- Industry leading 10 year warranty
- 900 CFM
- Dry gear in an average of 3 hours
- Dry turnout gear, hose, dive suits and more
- (3) 500 Watt heating elements totaling 1,500 Watts
- Includes: (4) hangers and (3) shelves
- 120v ac

#FH2G



EXT RESCUE 4011

The Most Dependable Rescue Safety Glove Available.

Features:

- SuperFabric® material for ISEA Level 5 Cut Resistance Palm
- TP-X® Palm Reinforcement on Palm Utilizes Highest Level of Abrasion Resistance While Maintaining Oil-Resistant Grip
- IR-X® Full Impact (Smash Guards) Exoskeleton
- Printed PVC Synthetic Leather Palm Provides Reliable Grip in Dry and Light Oil Conditions
- Breathable Airprene Velcro Cuff



Sizes S-XXL

EXT RESCUE 4013

Rescue Gloves That Are as Vigilant as the First Responders Wearing Them.

- SuperFabric® material for ISEA Level 5 Cut Resistance Palm
- TP-X® Palm Reinforcement on Palm Utilizes Highest Level of Abrasion Resistance While Maintaining Oil-Resistant Grip
- Superior Back-of-Hand Impact Protection Designed to Dissipate Forceful Blows Over a Large Area
- SlipFit® and Anti-Debris cuff Assists a Quick On and Off

Sizes S-XXL



EXT RESCUE 4014

Everything a First Responder Needs to Stay Safe While Saving Lives

- SuperFabric® material for ISEA Level 5 Cut Resistance Palm
- TP-X® Palm Reinforcement on Palm Utilizes Highest Level of Abrasion Resistance
- Hipora® Barrier That Meets ASTM and OSHA Fluid/Blood Borne (will not pull out)
- SlipFit® Cuff With Velcro Closure
- Back-of-Hand Impact Protection

Sizes S-XXL





Gladiator Extrication Gloves

- Carbon fiber knuckle guard
- Very flexible finger guards on back
- Velcro snugger enhances dexterity
- Pro-Tex outer layer provides level 5 cut protection for the whole hand
- Spectra lining offers level 4 cut protection and easy donning wet or dry
- Stretchable fabric provides better dexterity and less hand fatigue
- Comfort debris cuff on all models

#FX-54MB (moisture barrier)
Sizes XXS-4XL

Spider Extrication Gloves

- Durable spandex back for a tighter fit providing excellent dexterity
- Protective rubber backing on all fingers
- Elastic snugger for a secure fit
- Entire palm lined with Pro-Tex fabric for cut level 5 protection
- Debris cuff for extra protection
- Spectra liner provides cut level 4 protection and easy donning and doffing

#FX-66
Sizes XXS-4XL



Warrior Extrication Gloves

- Highly dexterous, long wearing glove
- Synthetic leather palm with wear patches on figure tips and palm area
- Flexible finger guards on the back
- Comfortable and rugged knuckle guard
- Moisture barrier is standard
- Spectra lining offers level 4 cut protection and easy donning wet or dry

#FX-95MB
Sizes XXS-4XL

The Flame Glove



- The first non-leather glove certified all fabric glove certified to NFPA 1971-2018
- The Flame glove withstands 60+ washes which is more common now as the result of cancer mitigation protocols
- The exterior shell of this glove is Kevlar fabric
- The Kevlar fabric on the palm has been treated with a special formulation of silicone to resist wear of the fabric and to provide a secure, firm grip, wet or dry
- The lining of the glove includes multiple layers of Kevlar and Nomex
- The moisture barrier is Porelle FR and will outlast the useful life of the glove and is guaranteed not to pull out



#FC-1000-(size)

Sizes XXS to 3XL



The Cairns® 1010 4" Tuff Shield,
Standard Flannel Head Liner, Black
Nomex Ear Flap, 6" Silk Screened
Eagle, Nomex Chin Strap w/Quick
Release & Postmans Slide, Reflexite
Trim.

Name Badge Not Included

Cairns® 660C Metro™ 4" Tuff Shield,
Standard Flannel Head Liner, Black
Nomex, Nomex Chin Strap w/Quick Re-
lease & Postmans Slide, Reflexite Trim.

Name Badge Not Included



The Cairns® 1044 4" Tuff Shield,
Standard Flannel Head Liner, Black
Nomex Ear Flap, 6" Silk Screened
Eagle, Nomex Chin Strap w/Quick
Release & Postmans Slide, Reflexite
Trim.

Name Badge Not Included

Cairns® Invader 664 4" Tuff Shield, Stand-
ard Flannel Head Liner, Black Nomex,
Nomex Chin Strap w/Quick Release &
Postmans Slide, Reflexite Trim.

Name Badge Not Included



Flared Long Bib Hoods

Black Carbon #HD-C6-FL
White 100% Nomex #HD-NMX100-FL
White Nomex Blend #HD-NMXBL-FL
Yellow P84 #HD-P84-FL



FireCraft® Safety Products

The Phoenix Structure Glove

Dexterity, Durability, and
Grip.
Better Fit by Design

Superior Dexterity (no
bunching at the finger tip or
palm)

Longer Wear with Fas-Dri
Leather

Porelle FR Moisture Barrier

True 3D Style Glove

Sizes XXS-4XL

#FC-P5000



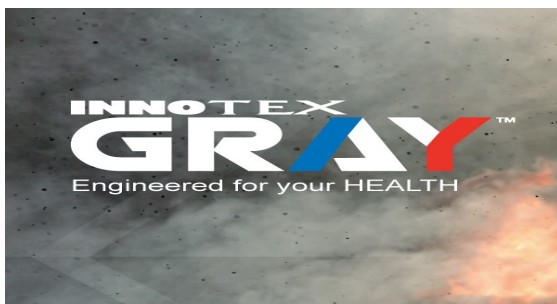
*All FireCraft Gloves have a Life-
time Warranty on Workmanship
and Material*



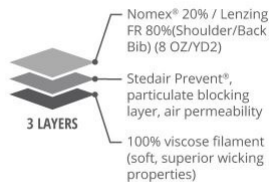
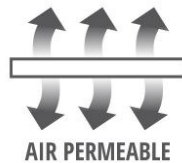
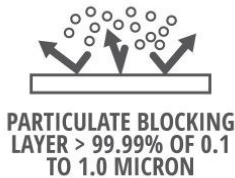
The FireGrip Structure Glove

Great Dexterity, Porelle FR moisture
barrier, TPP exceeds 60, Cow hide
leather. Sizes XXS-3XL.

FC-P4000



INNOTEX GRAY HOOD



- Shields vulnerable area between helmet & coat while maintaining air permeability.
- A 3 layer system: The exterior layer is a 20%/80% Nomex/Lenzing blend. The middle layer, a proprietary version of Stedair® PREVENT, blocks more than 99% of particulates ranging from 0.1 to 1.0 microns. The inner liner is a smooth, cooling multi-filament viscose.
- Allows for air permeation, which is essential to reduce the risk of increased core temperature.
- Uses a particulate blocking layer that reduces the risk of contamination by particulates 0.1 to 1.0 microns (μm) found in the combustion of structural fires by >99%.

#Gray25-ML
#Gray25-XL



INNOTEX ENERGY™

Welcome to the newest technology in turn-out gear



Airflow™ (Patent Pending)

Airflow™ (Patent Pending) is a three-dimensional padding system that cushions the SCBA while creating Airflow™ channels.

Built with heavy-duty mesh and precisely shaped, closed-cell foam, the Airflow™ channels manage perspiration while eliminating the sealed-envelope effect area when wearing an SCBA.



Coat features

- Ergo design for greater mobility
- Variable height collar, transition from 4" back to 3" front
- NO-GAP™ liner attachment
- Airflow™ three dimensional padding system
- Reflective piping at the seams
- Dual metabolic zones
- NO-BULK™ front closer
- "Full Motion" NoSeam™
- Segmented trim
- Angled cuffs

- NO-GAP™ liner attachment
- NO-BULK™ front closer
- Reflective piping at the seams
- Dual metabolic zones
- Segmented trim
- EMK knee

- Dual color armor shell gold/black
- Crosstech® moisture barrier
- Chambray pure thermal liner coat and pants w/ standard attachments, pockets, lettering, and trim.



Call for Demonstration and Pricing



www.GreatPlainsFire.com

DUAL CERTIFIED: • NFPA 1951 • NFPA 1977

Outer Shell: SIGMATM 7 oz, available in khaki or black

- ENERGY turnout gear DNA (unique patented features)
- Delivers greater comfort and ease of movement with a fitted cut, full-motion no seam shoulder, complete-motion crotch.
- Field-proven durability
- Lightweight first-responder package
- Available from Small to 7XL

Personalization of coat available

Contact **Great Plains Fire** for features and to set up a demonstration.

RDG-10



Lakeland OSX Wildland Gear



Wildland Fire Coat - Style WLSCT26

- Coat Length: 29" Front / 34" Back
- 3M™ Scotchlite™ Reflective Material - 2"
- High-Temp Black Delrin® YKK Zipper with Velcro® Front Closure
- Stand Up Overlapping Collar
- 2-Piece Curved Set-In Pleated Sleeves
- Elasticized cuffs with robust take-up straps
- Vertical Back Pleats
- 2" x 3.5" x 8" Radio Pocket on Left Chest
- Mic Strap above Radio Pocket
- 5.5" x 6" Pleated Pocket with flap on Right Chest
- 2" x 8" x 8" Cargo/Handwarmer Base Pockets
- LazerMax™ Reflective Piping on sleeves, shoulders and back



Wildland Fire Pants - Style WLSPT26

- 3M™ Scotchlite™ Reflective Material - 2"
- High-Temp Black Delrin® YKK Zipper Fly Closure
- 2" Elasticized Rear Waistband
- Five 3.5" Belt Loops
- Side Slash Pocket
- 2" x 10" x 10" Expansion Pockets
- 6" x 6.5" Rear Pleated Pockets with Flaps
- Triple Pleated Knees
- Elasticized cuffs with robust take-up straps
- LazerMax™ Trim on outside leg seams



STRUCTURE BOOTS

MENS RKD0087 // 14" //SIZES M/W/XW 5-16

WOMANS RKD0092 // 14" //SIZES M/W/XW 5-10

NFPA 1971 Compliant

ASTM F2413 Protective Toe Standard

ASTM F2413 Electrical Hazard Standard

ASTM F2413 Puncture Plate Standard

Stedfast Thermal Barrier and Waterproofing

Vibram® Fire and Ice Compound Outsole

Bloodborne Pathogen Resistant

Fire Resistant Leather Upper

Terra Suspension Removable Footbed

Sidewall Stitch Construction

Reflective Highlights

Fiberglass Shank

WILDLAND/RESCUE BOOTS

MENS RKD0086 // 8" //SIZES M/W/XW 5-16

WOMANS RKD0091 // 8" //SIZES M/W/XW 5-10

Speed Lace & Eyelet Lacing System

NFPA 1977 Compliant

NFPA 1999 Compliant

ASTM F2413 Protective Toe Standard

ASTM F2413 Electrical Hazard Standard

ASTM F2413 Puncture Plate Standard

Stedfast Thermal Barrier and Waterproofing

Vibram® Fire and Ice Compound Outsole

Bloodborne Pathogen Resistant

Fire Resistant Leather Upper

Terra Suspension Removable Footbed

Sidewall Stitch Construction

Fiberglass Shank

Optional Lace In Zipper





Black Diamond X2-Boot

Exclusive 3point Heel Lock System,
CROSSTECH™ Fabric with Omaha
Lining, Padded Shin Guard Multi
Layer Orthotic Foot Bed System
with Flex Sole

#0912-X2-boot-(size)



Black Diamond Rubber Boot

The Black Diamond Comfort Fit Form used to construct these boots has been designed for maximum comfort and accurate fit.

#9451-(size)





LXFB60



Premium Turnout Gear Bag; Luggage Style w/ Wheels, Rigid Sides, Reinforced Bottom & Retractable Handle

Available colors: Black, Red and Pink

#LXFB60WD-Color

LXFB10



- Dual zippers on all pockets with nylon pull tabs, zip the full length of the bag



- Separate helmet compartment will hold traditional style fire helmet

- Two personal/accessory pockets

Available in Black and Red

#LXFB10-(color)

LXFB10DC



- Made with heavy-duty nylon
- Deep woods camo to match your hunting gear
- Separate compartments for gear, helmet, mask, gloves and jumpsuit or change of clothes
- Water-resistant bottom and lower edge protects against wear and tear
- Includes padded adjustable shoulder strap with reflective stitching and FIRE FIGHTER weave

LXFGS



Value Nylon Webbing Strap for Structural Fire Gloves; Velcro w/ Snap Hook Attachment
Colors: Red, Black, and Pink

#LXFGS-color



LXFGS-HD

Premium Heavy-Duty Universal Glove Clip – Attaches to Cuff of Any Glove – Black w/ Triple Trim Reflective & Alligator Clip
#LXFGS-HD



LXMB50-SKD



This kit includes the following supplies: Deluxe Kit, Tweezers, Kelly Hemostats, Trauma Sheers, Bandage Sheers, Penlight, Am Ampules, Band-Aids (100), 4" x 4" Gauze Pads (50), 2" Roll Gauze (2), 3" Roll Gauze (2), 4" Roll Gauze (2), 2" Self-Adherent Bandage (2), 2" Elastic Ace Bandage (2), 5" x 7" ABD Pad (2), 8" x 10" ABD Pad (2), 1" Roll Cloth Tape, 2" Roll Cloth Tape, Iodine Wipes (10), Isopropyl Alcohol Wipes (10), Triple Antibiotic Ointment 1/2 oz, Instant Cold Packs (2), Eye Pads (2), Triangle Bandage (2), Eye Wash, Exam Gloves (4), Universal SAM Finger Splint, Glucose, Sting Pads (10), Adult BP Cuff, Sprague Steth, Barrier Mask, OPA Kit, (6) 10" x 30" Trauma Dressing, NC Tubing (2), NRB Mask (2), BVM Bag, 4-1/4" x 36" Roll Splint, 4" x 4" Occl Seal, Adjustable C-Collar, 2oz Burn Spray, 2oz First Aid Spray, Emergency Blanket, Quick Stop Hemostatic Blood Stop Spray, Buckle Tournqt, Iodine Wipes (10), (4) Color Coded Removable Pouches w/ Clear Vinyl Window & Zipper – all arranged nicely and packaged together in a box for you to customize to your liking. Limited lifetime warranty from Lightning X Products.

Colors Blue Red Orange
LXMB50-SKD-Color

LXMB30-SKC-Color



THE KIT: This kit includes the following supplies: Deluxe Kit, Tweezers, Kelly Hemostats, Trauma Sheers, Bandage Sheers, Penlight, Am Ampules, Band-Aids (100), 4" x 4" Gauze Pads (50), 2" Roll Gauze (2), 3" Roll Gauze (2), 4" Roll Gauze (2), 2" Self-Adherent Bandage (2), 2" Elastic Ace Bandage (2), 5" x 7" ABD Pad (2), 8" x 10" ABD Pad (2), 1" Roll Cloth Tape, 2" Roll Cloth Tape, Iodine Wipes (10), Isopropyl Alcohol Wipes (10), Triple Antibiotic Ointment 1/2 oz, Instant Cold Packs (2), Eye Pads (2), Triangle Bandage (2), Eye Wash, Exam Gloves (4), Universal SAM Finger Splint, Glucose, Sting Pads (10), Adult BP Cuff, Sprague Steth, Barrier Mask, OPA Kit, (6) 10" x 30" Trauma Dressing, NCTubing (2), NRB Mask (2), BVM Bag, 4-1/4" x 36" Roll Splint, 4" x 4" Occl Seal, Adjustable C-Collar, 2oz Burn Spray, 2oz First Aid Spray, Emergency Blanket, Quick Stop Hemostatic Blood Stop Spray, Buckle Tournqt, Iodine Wipes (10), all arranged nicely and packaged together in a box for you to customize to your liking. Limited lifetime warranty from Lightning X Products.

COLOR: Black, Navy Blue, Orange, Purple, Red

#LXMB30-SKC-color

LXMB20-SKB



Fill kit included with the following supplies: Standard Kit: Tweezers, Kelly Hemostats, Trauma Sheers, Bandage Sheers, Penlight, Ammonia Ampules (10), Band-Aids (100), 4" x 4" Gauze Pads (50), 2" Roll Gauze (2), 3" Roll Gauze (2), 4" Roll Gauze (2), 2" Self-Adherent Bandage (2), 2" Elastic Ace Bandage (2), 5" x 7" ABD Pad (2), 8" x 10" ABD Pad (2), 1" Roll Cloth Tape, Iodine Wipes (10), Isopropyl Alcohol Wipes (10), Triple Antibiotic Ointment 1/2 oz, Instant Cold Packs (2), Eye Pads (2), Triangle Bandage (2), Eye Wash Irrigation Solution, Exam Gloves (4), Universal SAM Finger Splint, Oral Glucose Gel, Sting & Bite Relief Pads (9), Adult Blood Pressure Cuff w/ Case, Sprague Stethoscope, CPR Mask, Oropharyngeal Airway Kit (6), Iodine Wipes (10), Sting Relief Swabs (10)

#LXMB20-SKB- Color

Colors: Black, Fluorescent Yellow, Navy Blue, Orange, Pink, Purple, Red



RIT FIRE BELT



- This simple design allows for pre-rigged egress systems
- Integrates into gear with belt loops
- Affordable option for certified Escape belt

#A1124

LOW ANGLE RESCUE/HAUL KIT



- 150' 7/16 Blue Water ProTac Rope
- 1-ISC D4/5 descender
- 1-ISC Heavy duty pulley. Aluminum with Bushing 50 kn
- 2-ISC Steel Ladder Hook, twist lock gate 40 KN
- 2-9' Anchor Strap
- 2- 15' 1.25" nylon webbing
- 1 Chicago carry bag
- 2-ISC Steel Carabiner, twist lock gate 50 KN
- 1-ISC Rope Grab

#A1512

FDTN RIT ENTRY BAG



- Designed by Jim McCormick of FDTN
- Lightweight and compact design
- Holds one hour bottle, regulator and face mask
- Separate color coded channels for high and low pressure lines

#A1171

Carabiners



- Oval-Offset-Ladder-Steel-Aluminum
- Screw-Auto Twist- Triple locking
- Individual serial numbered available
- Several color options available

CALL FOR PRICING ON CARABINERS

